

THIS DRAWING IS UNPUBLISHED.

RELEASED FOR PUBLICATION

,19

© COPYRIGHT 19

BY AMP INCORPORATED, HARRISBURG, PA.

ALL INTERNATIONAL RIGHTS RESERVED.

AMP PRODUCTS MAY BE COVERED BY U.S. AND FOREIGN PATENTS AND/OR PATENTS PENDING.

MOD

8

LOC

BD

DIST

39

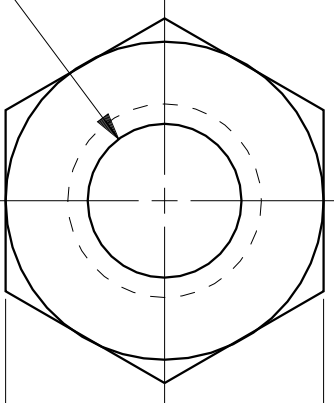
P

F

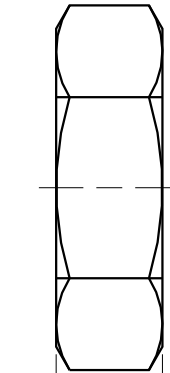
REVISIONS

ZONE	LTR	DESCRIPTION	DATE	APPROVED
	A	REV & REDRAWN ECN-1849	-	JW
	B	REVISED ECN-BD2480	11/23/88	—
	C	REV PER ECN BD4231	09/06/90	—

#4-40 THREAD



.184
ACROSS FLATS



.062 ^{+.004}_{-.007}

- 1 ZINC PLATED PER ASTM B633, TYPE II, CLASS SC1, (.000197-.000400), YELLOW CHROMATE.
- 2 ZINC PLATED PER ASTM B633, TYPE III, CLASS SC1, (.000197-.000400), CLEAR CHROMATE.

2	205821-3
1	205821-2
FINISH	PART NO

UNLESS OTHERWISE SPECIFIED DIMENSIONS ARE IN INCHES TOLERANCES ON: 2 PL DEC ± - 3 PL DEC ± .005 ANGLES ± -	DR 4-28-87 C. RICHARD	<div>AMP</div> AMP INCORPORATED Harrisburg, Pa. 17105	
	CHK 5-4-87 S. WELDON		
	APPD 5-4-87 M. PETERSON	NAME	
	APPD 5-4-87 V. KUMAR	#4-40 HEX NUT, AMPLIMITE®	
MATERIAL COLD ROLLED STEEL	PRODUCT SPEC	SIZE	FSCM NO
FINISH SEE TABLE	APPLICATION SPEC	B	00779
	WEIGHT	SCALE	DRAWING NO
		10:1	205821
		SHEET	1 OF 1